

Roseleigh Neighborhood Association Quarterly Community Meeting

July 19, 2012



Agenda

- Follow-up Item(s)
- Q2 Performance Highlights
- Q2 Financial Report (April – June 2012)
- RNA Membership Incentive Program
- Survey Questions
- Standing Committees Update
- RNA Marketplace
- Items Planned for October 2012
- Thank You

Follow-up Item(s)

Follow-up Item(s)



Question:

- Will the reduction in the number of Directors and Officers "**Error and Omission**" coverage reduce the amount of RNA annual insurance premium?

Response:

- No, the insurance premium for "**Error and Omission**" coverage is at the minimum premium, therefore a reduction in the number of Directors and Officers will not change the premium.

Premium Summary:

Error & Omission Coverage: \$882

Other Coverage Items: \$551

Annual premium: \$1433



Q2 Performance Highlights

Q2 Performance Highlights

Initiative	Goal Alignment	Completion Status
Schedule quarterly general meetings with residents	Accountability	Complete for Q2
Publish a quarterly news letter for residents	Accountability	Complete for Q2
Resolve insurance policy coverage matter	Accountability	Complete
Resolve surveillance camera operational matter	Safety and Security	Complete
Publish the Board's 2012 Action Plan	Accountability	Complete
Installation of stop signs at designated locations	Safety and Security	Moved to Q4
Installation of speed bumps at designated locations	Safety and Security	Moved to Q4
Publish quarterly financial reports	Accountability	Complete for Q2
Redesign Roseleigh website	Accountability	Complete

Q2 Performance Highlights

Initiative	Goal Alignment	Completion Status
Report the Board performance against established goals and objectives	Accountability	Complete for Q2
Invite relevant speakers and organizations to quarterly general association meetings	Residents Outreach	Complete for Q2
Reestablish security patrol	Safety and Security	Moved to Q4
Ensure the consistent beautification of Roseleigh front entrance	Property Enhancement and Custodianship	Complete for Q2
Ensure consistent beautification of residents lawns	Property Enhancement and Custodianship	Complete for Q2



Q2 Financial Report April-June 2012

Q2 Financial Report—April – June 2012

Beginning Balance:	\$9,172.49
Income this period:	\$3,169.00

Total Net Income:	\$12,341.49
 Expenses:	
Administration	
Legal and Audit	\$
Annual Report Filing	\$
Other	\$
Operating	
Utilities	\$199.61
Insurance	\$365.33
Supplies	\$
Meeting Facility	\$50.00
Other	\$131.98
Maintenance	
Grounds	\$1645.00
Total Expenses for 2nd Qtr:	\$2391.92

Net Balance:	\$9,949.57



**RNA
Membership
Incentive Program**

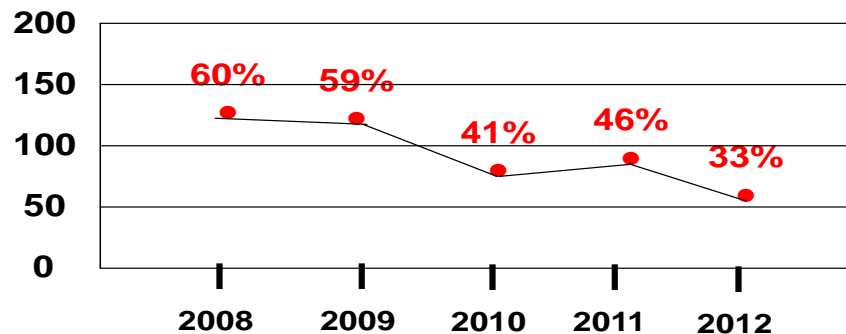
RNA Membership Incentive Program



GOAL:

Increase RNA membership level by 20% in 2013

Year-to-Year Paid Contribution %



Source: RNA

RNA Membership Incentive Program EXAMPLE:

Annual Income: +\$1000 (dues from 10 Residents @ \$100 per)

Annual Expenses: -\$600

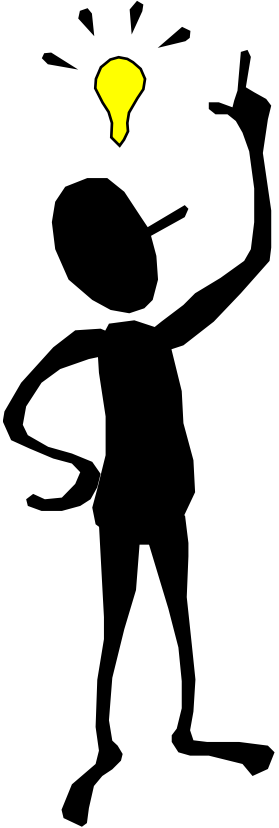
Reserve Fund: -\$150 (15% of annual income) (**This fund is used for emergencies**)

Net Income: +\$250 (annual income – (annual expenses + reserve fund))

RNA Dividend: +\$25 (net income / total residents paid) ($\$250 / 10 = \25)

Next Year Dues: +\$75 (regular dues – RNA dividend) ($\$100 - \$25 = \$75$)

Survey Questions



1. What are some recommendations to improve Roseleigh?
2. What are some recommendations to increase participation in RNA membership, standing committees and social events?
3. What type of events would you attend if they were held in Roseleigh?



Standing Committees Update

Standing Committees Update

- Audit Committee—new
- Meet and Greet—additional members
- Block Captains—new and additional members

***Need members for the following committees:

- Neighborhood Watch
- Landscaping



RNA Marketplace



Benefits

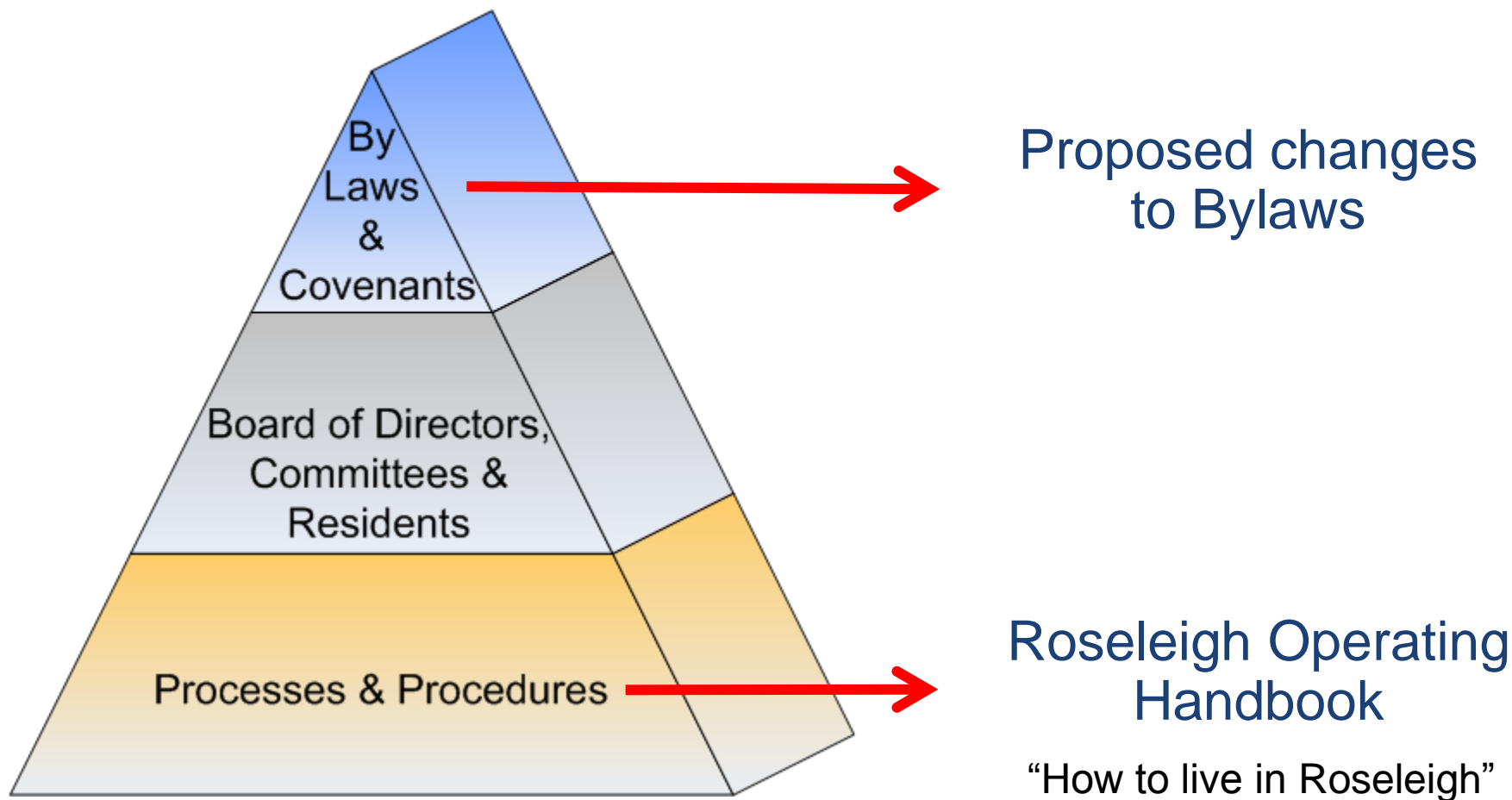
- Supplements Roseleigh annual garage sale
- Provides Roseleigh residents with the options of selling, buying, and donating household goods daily
- Provides online access to interested individuals locally, out of state, etc.
- Provides 24x7 online access

Please visit our website: www.roseleighneighborhood.org



Items Planned for October 2012

Roseleigh Operating Model



Thank you!

Board of Directors:

Curtis Timmons

President

Anthony Woodard

Vice President

Stanley Jones

Treasurer

Cindi Montgomery

Secretary

Richard Faber

At Large Member

John Hambrick

At Large Member

Miltonette Norman

At Large Member